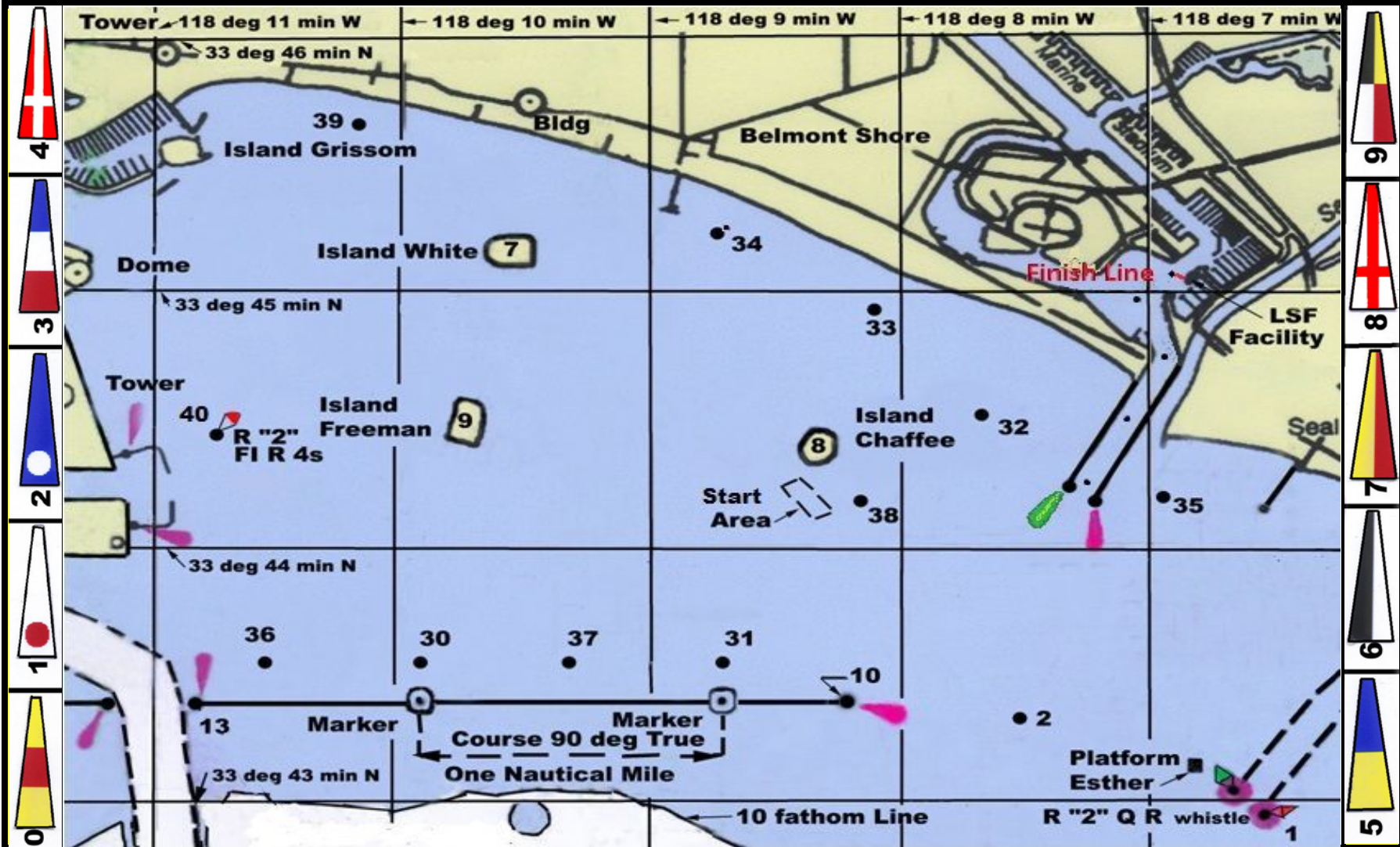
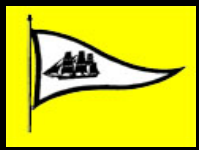


LITTLE SHIPS FLEET YACHT CLUB COURSE CHART 2018



Mark	Description	#	Course	DST	#	Course	DST
1	Anaheim Bay Channel Buoy R "2" Q R Whistle	10	S-2-35-38s-F	4.6	50	S-30s-33s-F	5.7
2	Spar Buoy - .5nm east of Mark 10, bearing 86° Mag	11	S-2-35-33-31-F	7.2	51	S-30s-34s-31-2-F	8.2
7	Oil Island White- Center of Island	12	S-2-33-36-F	8.8	52	S-30s-39s-31-35-F	9.1
8	Oil Island Chaffee - Center of Island	13	S-2-33-13-10-F	10.1	53	S-30s-34-13-10-32s-F	11.5
9	Oil Island Freeman - Center of Island	14	S-2s-13s-39s-37-34s-33s-F	12.9	54	S-30s-34-13-1-F	12.1
10	East End Long Beach Breakwater	15	S-2-33-30s-39-13-10-F	13.7	55	S-30s-33-39-13-2-35-F	13.0
13	West End Long Beach Breakwater						
		20	S-10s-13s-33s-F	8.1	60	S-36-35-F	6.3
30	Spar Buoy -100 Yd North of West Mile Marker	21	S-10s-13s-39s-33s-F	9.5	61	S-36s-34s-31-32s-F	8.9
31	Spar Buoy -100 Yd North of East Mile Marker	22	S-10s-13s-39s-31-33s-F	11.6	62	S-36s-39s-33s-1-35-F	10.8
32	Spar Buoy -1/2 mile NW from West end of the Alamitos Bay Jetty, 500 yards off the beach	23	S-10s-13s-34s-37-2-F	11.4	63	S-36s-33s-31-35-37s-32s-F	13.0
		24	S-10s-13s-34s-36-31-35-F	12.6	64	S-36s-39s-34s-13-1-2s-F	14.3
33	Spar Buoy -1 mile NW from West end of the Alamitos Bay Jetty, 350 yards off the beach						
		31	S-31s-34s-F	5.2	70	S-40s-34s-37-32s-F	9.1
34	Spar Buoy - 500 yards east of the Belmont Pier 300 yards off the beach	32	S-31s-39s-F	7.1	71	S-40s-33s-30-2-F	10.4
		33	S-31s-30s-34s-37-F	8.5	72	S-40s-39s-30-34s-31-32s-F	12.2
35	Spar Buoy - 600 yards west from the Seal Beach Municipal Pier	34	S-31s-34-13-10-F	9.8	74	S-40s-34s-13-1-35-2s-F	14.0
		35	S-31-35s-2s-39-37-F	11.7			
36	Spar Buoy - 1/2 mile west of the West Mile Marker and 100 yards north of the Breakwater	36	S-31s-34-13-10-34-37-F	14.3	80	S-39-36-F	8.0
					81	S-33-36s-34s-31-2-F	10.1
37	Spar Buoy - 100 yards north of the 1/2 mile Mile Marker, midway between Mark 31 and Mark 30	41	S-37s-39s-33s-F	7.3	82	S-39-36-34s-2-35-F	10.9
		42	S-37s-34-30-32s-F	8.7	83	S-33-36s-39s-33s-1-35-2s-F	13.5
38	Spar Buoy - 700 yards SE from the south Marker Horn on Oil Island Chaffee	43	S-37s-34-13-10-32s-F	10.9	90	S-36s-7s-9-8-32s-F	7.4
		44	S-37s-34-36s-39s-31-32s-F	12.7	91	S-37s-9s-7s-8-35s-1s-2s-F	9.3
39	Spar Buoy - 400 Yards off the beach from the Long Beach Lifeguard Station	45	S-37s-34-30s-39-13-1-F	15.2	92	S-10s-13s-7s-9-8-33s-32s-F	9.9
40	West Long Beach Harbor Buoy R "2" F1 R 4s						
	*tetrahedron may replace a missing buoy				01	S-W-L-F	3.0
F	Finish: 90 degrees opposite shore flag					(Set marks 3/4 nm W & L of S)	