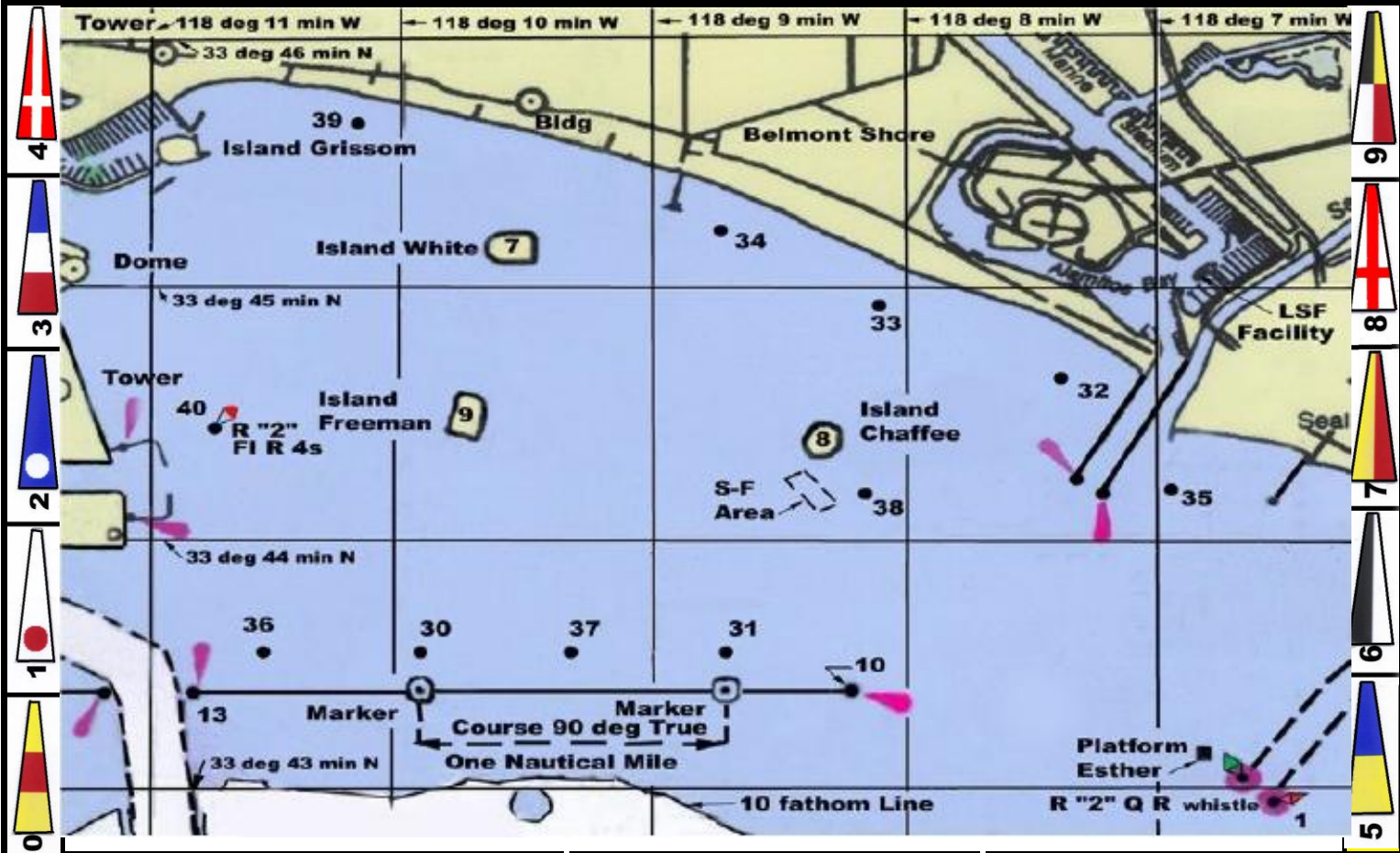


LITTLE SHIPS FLEET YACHT CLUB

2020 COURSE CHART



Mark	Description	#	Course	DST	#	Course	DST
1	Anaheim Bay Channel Buoy R "2" Q R Whistle	10	S-1-33-F	5.2	50	S-30s-33s-F	4.5
4	Platform EVA 33-39.7N 118-03.6W	11	S-1-7s-33s-F	7.3	51	S-30s-7s-34s-31-32-F	8
7	Oil Island White- Center of Island	12	S-1-39-F	7.6	52	S-30s-39s-7s-37-33s-F	8.8
8	Oil Island Chaffee - Center of Island	13	S-1-33-13-10-32-F	10.0	53	S-30s-34s-31-32-F	9.9
9	Oil Island Freeman - Center of Island	14	S-1s-13s-39s-31-7s-33s-F	14.4	54	S-30-10s-13s-39s-31-8s-F	11.7
10	East End Long Beach Breakwater	15	S-1-33-30s-39-13-10-32-F	15.4	55	S-30s-9s-38s-10s-13s-7s-33s-F	12.2
13	West End Long Beach Breakwater						
15	Platforms Ellen & Elly 33-37.6N 118-07.8W	20	S-10s-13s-33s-F	6.6	60	S-36s-33s-F	5.2
30	Spar Buoy -100 Yd North of West Mile Marker	21	S-10s-13s-39s-33s-F	8.3	61	S-36s-40s-7s-32s-F	6.5
31	Spar Buoy -100 Yd North of East Mile Marker	22	S-10s-13s-9s-37-7s-32s-F	9.8	62	S-36s-39s-7s-37-32-F	9.2
32	Spar Buoy -1/2 mile NW from West end of the Alamitos Bay Jetty, 500 yards off the beach	23	S-10s-13s-39s-31-33-F	10.5	63	S-36s-7s-31-1-32-F	10.4
33	Spar Buoy -1 mile NW from West end of the Alamitos Bay Jetty, 350 yards off the beach	24	S-10s-13s-40s-1-33-F	11.4	64	S-36s-7s-37-34s-31-33s-F	11.5
34	Spar Buoy - 500 yards east of the Belmont Pier 300 yards off the beach	31	S-31s-39s-33s-F	6.0			
35	Spar Buoy - 600 yards west from the Seal Beach Municipal Pier	32	S-31-32-9-37-F	6.4	71	S-40s-33s-30-32-F	9.1
36	Spar Buoy - 1/2 mile west of the West Mile Marker and 100 yards north of the Breakwater	33	S-31s-39s-7-32s-F	6.5	72	S-40s-39s-30-34s-31-32-F	11.3
37	Spar Buoy - 100 yards north of the 1/2 mile Mile Marker, midway between Mark 31 and Mark 30	34	S-31s-30s-7s-37-33s-F	7.7			
38	Spar Buoy - 700 yards SE from the south Marker Horn on Oil Island Chaffee	35	S-31s-34-13-10-32-F	8.5			
39	Spar Buoy - 400 Yards off the beach from the Long Beach Lifeguard Station	36	S-31s-33-13-10-33-37-33s-F	13.1	80	S-39-40-33s-F	5.3
40	West Long Beach Harbor Buoy R "2" F1 R 4s *tetrahedron may replace a missing buoy	37	S-31-32s-1-39s-37-33s-F	13.4	81	S-39-36-37-34s-F	7.3
S-F	Line is near Mark 38	41	S-37s-33s-31-32-F	6.1	82	S-39-9s-40-36-31-32-F	7.9
		42	S-37s-39s-33s-F	6.5	83	S-33-13-1-33-F	10.4
		43	S-37s-7-13-10-32-F	9.2	90	S-32-33-8-F	2.2
		44	S-37s-7s-37-34s-31-32-F	10.3	91	S-32-9-30-F	5.9
		45	S-37s-7s-30s-39-13-10-33-F	13.9	92	S-15-32-F	20.5
		1	Verbal		2	S-W-L-F	3.0
		3	S-4-F	12.1		(Set marks 3/4 nm W & L of S)	