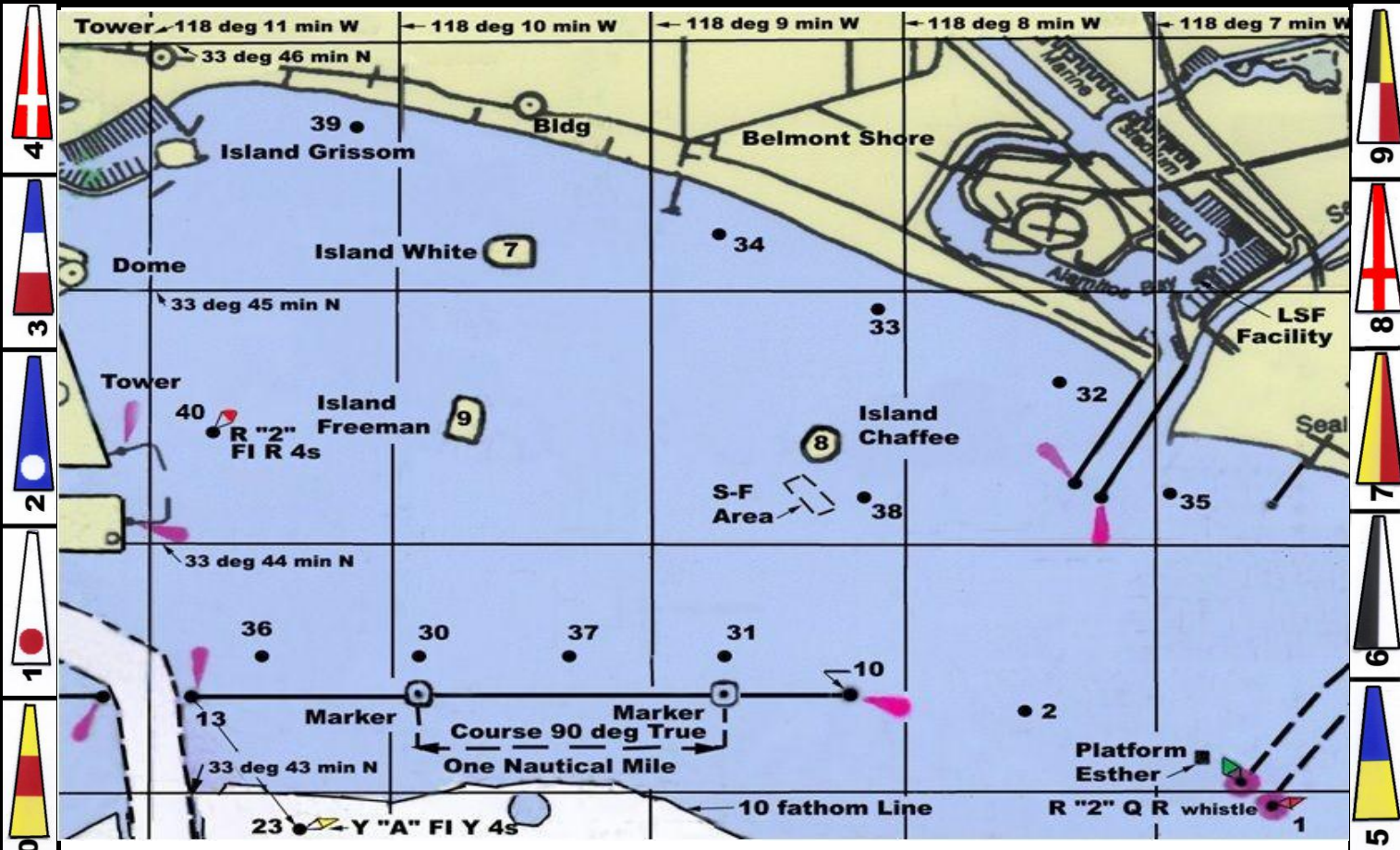




LITTLE SHIPS FLEET YACHT CLUB

COURSE CHART 2019



Mark	Description	#	Course	DST	#	Course	DST
1	Anaheim Bay Channel Buoy R "2" Q R Whistle	10	S-2-33-F	3.3	50	S-30s-34s-33s-F	4.7
2	Spar Buoy - .5nm east of Mark 10, bearing 86° Mag	11	S-2-34s-33s-F	4.6	51	S-30s-34s-31-2-32-F	8.3
7	Oil Island White- Center of Island	12	S-2-34-39-F	6.6	52	S-30s-39s-7s-37-33s-F	8.2
8	Oil Island Chaffee - Center of Island	13	S-2-33-13-10-32-F	8.9	53	S-30s-7s-34s-31-32-F	7.9
9	Oil Island Freeman - Center of Island	14	S-2s-13s-39s-31-34s-33s-F	11.6	54	S-30s-9s-38s-10s-13s-7s-33s-F	11.1
10	East End Long Beach Breakwater	15	S-2-33-30s-39-13-10-32-F	14.0	55	S-30-10s-13s-39s-31-8s-F	11.0
13	West End Long Beach Breakwater						
		20	S-10s-13s-33s-F	7.0	60	S-36s-34s-33s-F	5.7
30	Spar Buoy -100 Yd North of West Mile Marker	21	S-10s-13s-39s-33s-F	8.0	61	S-36s-34s-31-2-32-F	9.3
31	Spar Buoy -100 Yd North of East Mile Marker	22	S-10s-13s-39s-31-33-F	10.0	62	S-36s-39s-7s-37-32-F	9.3
32	Spar Buoy -1/2 mile NW from West end of the Alamitos Bay Jetty, 500 yards off the beach	23	S-10s-13s-40s-2-33-F	9.7	63	S-36s-7s-37-34s-31-33s-F	10.7
33	Spar Buoy -1 mile NW from West end of the Alamitos Bay Jetty, 350 yards off the beach	24	S-10s-13s-9s-37-34s-32s-F	9.9	64	S-36s-39s-34s-13-1-32-F	14.9
34	Spar Buoy - 500 yards east of the Belmont Pier 300 yards off the beach	31	S-31s-34s-32s-F	4.4	70	S-40s-34s-37-32-F	9.3
35	Spar Buoy - 600 yards west from the Seal Beach Municipal Pier	32	S-31s-39s-33s-F	5.7	71	S-40s-33s-30-32-F	10.4
36	Spar Buoy - 1/2 mile west of the West Mile Marker and 100 yards north of the Breakwater	33	S-31s-30s-34s-37-33s-F	7.7	72	S-40s-39s-30-34s-31-32-F	11.4
37	Spar Buoy - 100 yards north of the 1/2 mile Mile Marker, midway between Mark 31 and Mark 30	34	S-31s-34-13-10-32-F	9.5	74	S-40s-34s-13-23-1-32-2s-38-F	15.1
38	Spar Buoy - 700 yards SE from the south Marker Horn on Oil Island Chaffee	35	S-31s-32s-2-39s-37-33s-F	11.0			
39	Spar Buoy - 400 Yards off the beach from the Long Beach Lifeguard Station	36	S-31s-34-13-10-34-37-33s-F	13.0	80	S-39-40-33s-F	6.3
40	West Long Beach Harbor Buoy R "2" F 1 R 4s *tetrahedron may replace a missing buoy				81	S-39-36-37-34s-F	7.7
S-F	Line is near Mark 38				82	S-39-9s-40-36-31-32-F	9.1
		41	S-37s-39s-33s-F	5.9	83	S-33-13-1-33-F	10.9
		42	S-37s-34s-31-32-F	6.8			
		43	S-37s-34-13-10-32-F	10.2			
		44	S-37s-7s-37-34s-31-32-F	9.7			
		45	S-37s-34-30s-39-13-10-33-F	13.3			
		1	Verbal		2	S-W-L-F	3.0
						(Set marks 3/4 nm W & L of S)	